

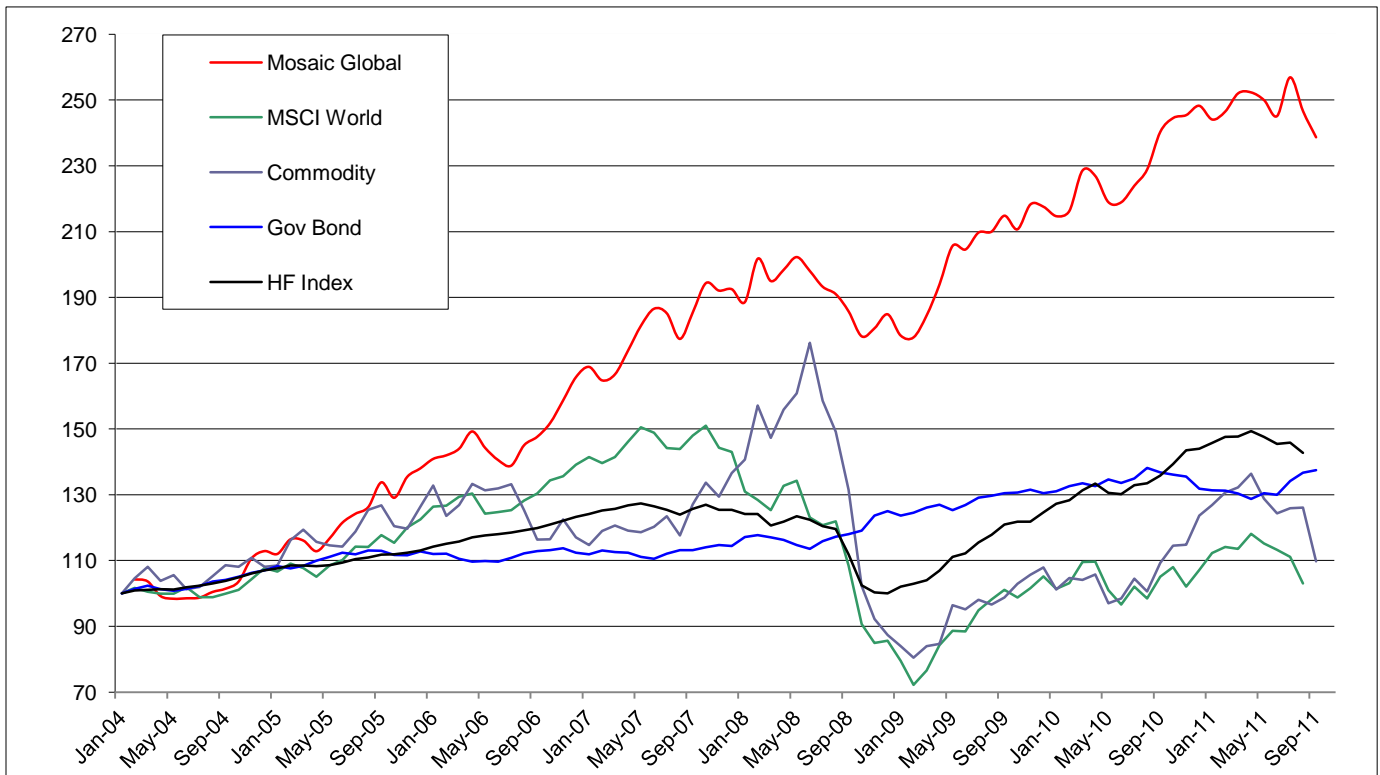


## MOSAIC GLOBAL FUND – FACT SHEET

The Mosaic Global Fund is a boutique multi-asset fund of funds that targets long-term capital growth through active and flexible asset allocation to minimize market volatility. The fund invests in a careful selection of funds holding traditional stocks, bonds, commodities, real estate and alternative investments.

The Mosaic Global Fund is actively managed based on in depth research into the underlying investments styles and proprietary modeling. Our multi-asset, multi-manager approach emphasizes flexibility to control downside risks. The goal of the fund is capital preservation and growth while controlling downside risk through diversification, no leverage and non-correlated assets that perform well in various market climates.

### Historical Monthly Performance



The graph, and performance data below shows pro forma performance, from 2004 until the fund started in January 2011, using Cardea International's asset allocation model. Past performance is not a guide to future performance



## Performance Data

Compounded Return (CARR):	11.76%
Annualized Standard Deviation (VOL):	11.92%
Maximum Drawdown (MaxDD):	12.06%

## Fund Data

Fund Manager	: Cardea International S.A
Fund Administrator	: Vistra Fund Services
Lawyers	: Speechly B. Pfeiffer & Partners
Auditor	: Ernst & Young
Custodian	: Dexia Bank Luxembourg
Fund Domicile	: Luxembourg
Fund Liquidity	: Monthly
Management Fee	: 1.25%
Performance Fee	: 10% HWM

## Important Information

This document is intended for well informed investors and financial advisers. It is for informational purposes only. It is not an offer to sell or a solicitation to buy any financial product. This document is not directed at or intended for use by the general public. Principle loss is possible. Past results are not necessarily an accurate predictor of future results. This document does not substitute for exercise of independent judgment. Cardea International Management S.A is authorized and regulated by the CSSF in Luxembourg to manage the Cardea International Fund S.C.A SICAV-SIF. The mosaic Global Fund is a sub-fund complying with the outlined investment objective and policy of the fund. These directions are to be found in the fund's prospectus which at all times can be required from the investment manager's main office.